

# Rocky Mountain Wa Shonaji Quilt Guild

## “A Kaleidoscope of Colors, Textures, and Patterns”

### Airport Hosts “Perfect Patchwork” Quilt Show

The Rocky Mountain Wa Shonaji contribution to the DEN exhibit is up and open for viewing by airport users. VP Programs Joette Bailey-Keown specifically thanked Marcia Walker, Stephanie Hobson, and Karen von Phul for their help in installing the exhibit, which showcases the exceptional quilting talent of the local community. Rocky Mountain Quilt Museum, Denver Metro Modern Quilt Guild, and Colorado Quilting Council are also part of “Perfect Patchwork,” which features 100 works.

The DEN Arts Program explains, “Colorado has a rich tradition of quilting, and the organizations represented in ‘Perfect Patchwork’ are dedicated to celebrating this unique craft and its enduring legacy. Visitors can explore the display cases and will find quilts representing the city of Denver, capturing the essence of Colorado’s natural beauty, and featuring aviation themes.”

The press release continues, “Visitors will also be able to appreciate the intricate details of the meticulously hand-sewn quilts that reflect the history and culture of the guilds, offering a glimpse into the lives and stories of the quilters and their communities.”

“Perfect Patchwork” is located at the airport in Ansbacher Hall, near A-Bridge security, and on level three of Concourse C. It includes large hanging quilts, unique quilted clothing, and a variety of expertly crafted quilts in different shapes and sizes. It will be available through February 2024.

### Wa Shonaji to View DEN Quilts Nov 5

Members who have signed up (note that it’s too late now to join this event) will be able to enter Concourse C to view the large quilt. Group size is limited as they must be escorted by a DIA representative. **You must have your license/passport on the day of the tour to gain access to Concourse C.** To minimize parking expense, members may want to coordinate carpools or ride RTD for a ticket price of \$10—less than parking!

See photos of the exhibit on pages 4 and 5.

#### Inside This Issue

- President’s Message..... 2
- Upcoming Events..... 2
- New 2023 Members..... 4
- DEN Exhibit Photos..... 5
- Retreat 2023..... 7
- Committee Reports ..... 12
- Potpourri ..... 14
- Show ’n Share Form ..... 15
- Wa Shonaji in *QuiltFolk* . 16
- Backyard Quilts..... 18
- Aurora Library Exhibits.. 19
- Quilt to Honor Enslaved. 20
- 8 Ways to Label Quilts... 21
- Sister Stitcher Redux ..... 27
- November, December Birthdays ..... 28
- Area Textile Events..... 29

#### Upcoming Programs

- November 4—Gift Sew-In
- December 2—Holiday Luncheon
- January 6—Rita Meyerhoff Embellishment Workshop
- February 3—Black History Month Celebration

## President's Message

The year of 2023 has been a very exciting year. Wa Shonaji has been on the go since the minute the year started. We have had request for exhibits, trunk shows, two custom quilts, quilts for a magazine, quilts for a coffee table book, and teachers for beginning quilters. The year has been full making the wonderful retreat put together by Karen Von Phul very refreshing and necessary for those who have participated in some or all of the the activities of the year. If you haven't participated in any of these activities, you have two 2023 activities left to get involved in. They

are the November Christmas gifts and the December Christmas Luncheon. In November you will have the opportunity to learn how to make hand made gifts to give at Christmas. Handmade gifts are the best. At the December luncheon you will meet your new officers and have time to socialize. Wa Shonaji has lots of opportunities for all of its members. It is up to you to take advantage of them.

Marcia Walker, President

## Upcoming Events from Joette Bailey-Keown

### November Workshop

Can you believe it? The holiday season is fast approaching and the challenge, of course, is to be ready for it all. The Wa Shonaji Quilt Guild is here to help. At our meeting on Saturday, November 4, we will learn to make Christmas coasters, a table runner, a quilted dish (to hold miscellaneous items on your bathroom counter, etc.) and potentially, a quilted ornament. Your family and friends will very much appreciate a quilted gift from you. Members will pay \$10 for this workshop.

Below is the supply list for the class at 12 p.m. on Saturday, Nov. 4. Note that the Beginner Quilting Class also starts at 12 p.m.

#### Supply List—\$10 Holiday class

These classes require the standard supplies including sewing machines, sewing machine needles, cutting board, rotary cutter, scissors, ruler, seam ripper and thread.

##### Fabric Bowl

- Two 10" squares of coordinating fabrics. One for the inside and one for the outside of the bowl.
- Thread (to match the outside fabric).
- Three shirt size buttons to coordinate with the outside fabric. (optional).

##### Quilted Coasters

- Eight 5" squares of coordinating fabrics: four for the top of the coasters and four for the bottom of the coasters.
- Four 5-1/2" squares of batting
- Coordinating thread



### Table Runner

- For back of runner and trim: 18" long by width of fabric (WOF)
- For center of runner: 9 to 12" long by WOF
- Coordinating thread
- 2 1" buttons for trim

## Beginner Quilting Class to Start at Noon

The next Beginner Quilting class is scheduled for 12 p.m., Saturday, Nov. 4, at CrossPurpose. This class will focus on how to quilt the layers together. Class participants can either bring their quilts to “quilt” or a practice 12" x 12" sandwich (top, batting, and backing). You may want to consider a free motion foot (also called a darning foot) for your specific machine if you do not already have one. These can be found on Amazon or at a quilt shop. Stephanie Hobson will teach this class. You’re almost done! We are looking forward to seeing some of your quilts at the Christmas luncheon.

### Needed for Class

Finished quilt blocks sewn together with sashing; batting and backing at least 2" larger than the top on all sides *or* a practice 12" x 12" “sandwich” consisting of a top, batting, and backing.

## Christmas Luncheon—Be Dazzled

If you all recall, the 2022 Christmas Luncheon was soooo delightful. The café was decorated with lovely centerpieces and handmade napkins, the food was great, the Christmas quilts were all beautiful, Mr. and Mrs. Right was fun (as usual), and the installation of officers was perfectly done by Carolyn Somerville. This year, on Saturday, Dec. 2, at 11 am, at CrossPurpose, we’ll do this all again.

- Cost for the Luncheon is \$40, due Saturday, Nov. 4. If you find you cannot attend, no refund can be made after Nov. 11. On the menu is herbed chicken, roast beef, roasted vegetables, cornbread salad, macaroni and cheese, candied yams, greens, chocolate cake, and a cobbler.
  - To participate in the Mr. & Mrs. Right game, bring a wrapped gift, with a minimum value of \$15.
  - Bedazzle some tennis shoes to wear with your best/fanciest Christmas sweater.
- The Wa Shonaji Christmas Luncheon is always fun and we look forward to seeing you there.



*This Photo by Unknown Author is licensed under [CC BY-SA](#)*

## Embellishment Class

The \$25 fee for this class, scheduled for Jan. 6, is now being collected. It will be taught by Rita Meyerhoff, who will teach hand embroidery stitches for our 30th Anniversary crazy quilt blocks.

## Would You Like to Help Make a Civil Rights Quilt?

The Guild is looking for quilters to participate in the construction of two Civil Rights quilts: one for CrossPurpose and one for Bill Bynum, who is currently scheduled to speak at our Black History Month luncheon. If you have a favorite civil rights figure that you would like to see portrayed in fabric, please let me know via e-mail at [jebkeown@gmail.com](mailto:jebkeown@gmail.com).

## Meet Three More of Wa Shonaji's New Members in 2023

*Wa Shonaji has so many new members this year! The newsletter will introduce them to you over the next few issues so you can get to know them more quickly. Like all Wa Shonaji members, they're fascinating people. Introduce yourself when you see them. And we'll highlight*



*Billie Hall*

### **Billie Hall**

I am a new quilter. I joined Wa Shonaji to learn how to properly quilt. Learning more about the various types and styles appeals to me.

### **Jeff Tennant**

I joined because everyone here is just so darned friendly! I came first to the guild meeting in June to attend the Beginner's Quilting Seminar at the suggestion of a friend, Monica Lynn, and I had a great time! I am brand new quilter, so I am just looking to nail down some basics to start but have already learned so much! I have three quilts gifted to me from my grandma that I have always adored and hope to someday be able to create something nearly as unique and cherished as those! Thank you to everyone in the guild and especially Monica for being so welcoming and helpful these past few months. I look forward to future meetings!

### **Teri Washington**

I joined this group because I love Quilting and learning. The history of learning from the older makes me happy. I am a new quilter. It is calming for me. I really enjoy it. I want to know more of all the different ways to make the quilts come



*Jeff Tennant*



*Teri Washington*



*Adam Eberl*

alive to the different beautiful patterns and styles. I like putting the patterns together to see what they become and what I can make of them. I love the different colors and themes. I'm here to pick up the knowledge that I can learning from everyone in the group. As long as GOD has me here. I have seen some beautiful Quilts that everyone has made and I want to be that individual to become one with all you beautiful souls and doing the same things. I truly want to Thank you all for letting me become part of the group.

### **Adam Eberl**

I joined Wa Shonaji because my best friend's mom, Monica Lynn, is a member. She invited me and two other friends, Jeff Tenant and Buzz (Kevin) Humphrey, to join the guild. I am brand new to quilting but since joining I have made two quilts and am working on a third. I have found quilting to be quite fun and enjoyable. I also crochet and similar to that I find joy in creating something that is wholly mine and new. I would like to learn paper piecing and also refine my skills on getting those perfectly crisp corners. I am currently a student at CU Boulder studying applied math in Statistics and Data Science.



## More DEN Exhibit ...

*At right, Wa Shonaji's large quilt highlights African American achievements in aviation. See the July 2023 issue of this newsletter for more details.*

*Below, two showcases full of the skills and talents of Wa Shonaji members.*





More DEN Exhibit ...



Colorado  
Quilting  
Council



Above  
and at  
right:  
Wa  
Shonaji  
Quilt  
Guild

## 2023 Retreaters Sew, Laugh, Learn, View Eclipse...

What an awesome retreat! Twenty-one quilters gathered at Highlands Retreat Center in Allenspark—from as far as Oklahoma and New York plus two from another quilt guild!

Thursday was a quiet day, getting acclimated to new rules since the Center has been taken over by a new organization. We still had to make our own beds! But the food was awesome and staff were very accommodating.

Friday. We caravanned to Lyons Quilt Shop where we met local fiber artist Barbara Beasley. We toured her studio, which is upstairs at the quilt shop. She talked about how she got started and how her quilting has evolved into a fulltime job. She teaches classes on appliqued animals and thread painting. Oh yes! I forgot that after talking with her, we got to shop!

I always said we had a presentation by our “guest” on Saturday. It was none other than Luana Rubin, who joined us on Friday. Saturday was our busiest day. First, in the midst of the solar eclipse, Luana introduced us via Zoom to Lisa Woolfork, a podcaster. Her 200th podcast was an interview with Bisa Butler. Marcia Walker introduced us and told Lisa about the guild. She has a fabulous personality and Luana encourages us to keep in touch with her. Her podcast is “Black Women Stitch.”



*Barbara Beasley and Luana Rubin*



*Barbara's portrait of sheep*

After dinner, Luana spoke on the latest trends in modern quilts, internationally and domestically, and told us about quilters to watch for.

On Sunday we had the meeting room until noon, so there was no rush to leave. Some packed up and left earlier. Others stayed and finished working on their projects. Some could have gone back to Lyons Quilt Shop to do some more shopping.

All in all, it was another great retreat, where we learned from each other. A couple of us learned the real reason for using the Add-a-1/4 ruler! Brenda will teach that class. I got permission to teach a class on making a mat for the sewing machine.

—Karen von Phul



*Shopping at Lyons Quilt Store—with a Retreat Discount!*





*Left, a group photo. Above, Susan Morrison was first to complete a project.*

### Retreat Achievements

- Quilt Quilted, 1
- Tops Finished ready for quilting, 9,  
plus 2 waiting for borders
- Miscellaneous
  - Burp Cloth, 1
  - Pillow Cases, 10
  - 30th Anniversary Blocks, 4
  - Tulip Blocks, 2
  - Jacket, 1



*Right, the Highlands Retreat Center in Allenspark, Gateway to the Rockies, presents a welcoming face to visitors.*

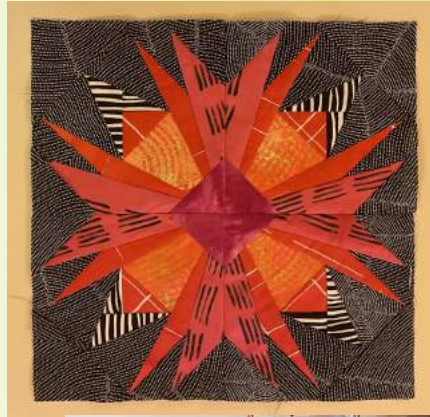


*Above, retreaters tour Barbara Beasley's studio; right, Gloria Montgomery finished her 30th anniversary square.*





*Deborah Sweatt finished her top with curved piecing!*



*Columbine member Debi Grundmeier demonstrated paper piecing with freezer paper and look at the fabulous results. Brenda will teach a class soon!*



*Above, retreaters took a break to watch the annular solar eclipse! This retreat had everything! Right, Karen von Phul shows off a panel top.*







*Clockwise from top left, Karen, Linda, Brenda, and Debi talk quilting. Stephanie, Ann, and Karen share techniques. Marci-a's niece Varna Nolen from Oklahoma models the jacket she's making. Priscilla displays just one of the baby quilts she made. And Netta finished her 30th anniversary block!*





*Right, Ann pauses her quilting to converse with Brenda, Netta, and Deborah. Below, Columbine member Linda Kennedy finished her Mystery quilt!*



*Above, still creating after the sun went down.*



*Julie Marsh finished the top for a wedding quilt— they were married a mere four years ago!*

## Committee Reports

### Parliamentarian

To the members of Wa Shonaji Quilt Guild,

The election of our 2024 Executive Board will be held at the November meeting. The persons who have agreed to serve on the Board are:

- President: Joette Bailey-Keown
- Vice President Programs: Linda White
- Vice President Membership: Deborah Sweatt
- Secretary: Rosemary Sherrell
- Treasurer: Geneva Lottie
- Historian: Brenda Ames
- Librarian: Connie Turner
- Newsletter Editor: Julie Marsh
- Exhibits Coordinator: Joanne Walton

Nominations will be taken from the floor at the November meeting. This gives you another chance to join the Board.

If you wish to vote via an absentee ballot, please let me know via email or telephone and arrangements will be made.

Please contact me if you have questions.

Edith Shelton, Parliamentarian

### Hospitality

Volunteers for November are Stephanie Hobson, Billie Hall, and Marcia Walker.

### Membership

Membership dues (\$40) for 2024 are now being accepted. Print out the Membership Form on page 23 or on the website under the Members' Only tab and bring it to a meeting or mail to

**Rocky Mountain Wa Shonaji Quilt Guild**

**P.O. Box 370405**

**Denver, CO 80237-0405**

**Please do not bring payment to the December luncheon.**

### Exhibit Committee

Wa Shonaji Quilts are on display October–December 2023 at the Martin Luther King Jr. Library, 9898 E. Colfax Ave., Aurora, CO 80010

and the Tallyn Research Library, 23911 E. Arapahoe Road, Aurora, CO 80016.

The invitation to participate in a trunk show June 17, 2024, for Front Range Contemporary Quilters has been accepted. As the time draws closer, we will ask for quilts to enhance our script and also for selections from our fabulous Chorus.

Front Range Contemporary Quilters meet in the evening; the location is to be determined. Our own Karen von Phul reached out to us to present the trunk show. As many of us will recall, we presented to them a few years ago when there was a horrific snowstorm and there were more of us there than them. Ha ha.

*Exhibit Coordinator – Joanne Walton with Co-Chairs - Marcia Walker/Linda White /Mary Lassiter/Stephanie Hobson*

### Librarian

I was so excited that all the books brought to the August meeting were scooped up. If you were not able to get to the donation table before they were all taken, more are on the way. I will be bringing them to the November meeting. Thanks to all who left a donation (optional but encouraged).

—Connie Turner

### Comfort Quilts

As Comfort Quilt chair, I'm happy to report that we have 27 donated quilts from members. These quilts are donated to the guild by members on their birthday, not only in celebration of their birthday, but to make sure we can support members who have gone through a bereavement or serious illness. Thank you for ALL who have stepped up and donated thus far this year: Artie Johnson, Edith Sheldon (x2), Marcia Walker, Mary Lassiter, Monica Lynn, and Nanci Vaughn, and those who donated at the end of 2022: Julie Marsh, Stephanie Hobson, and Pat Moore.

Salute! Nanci Vaughn

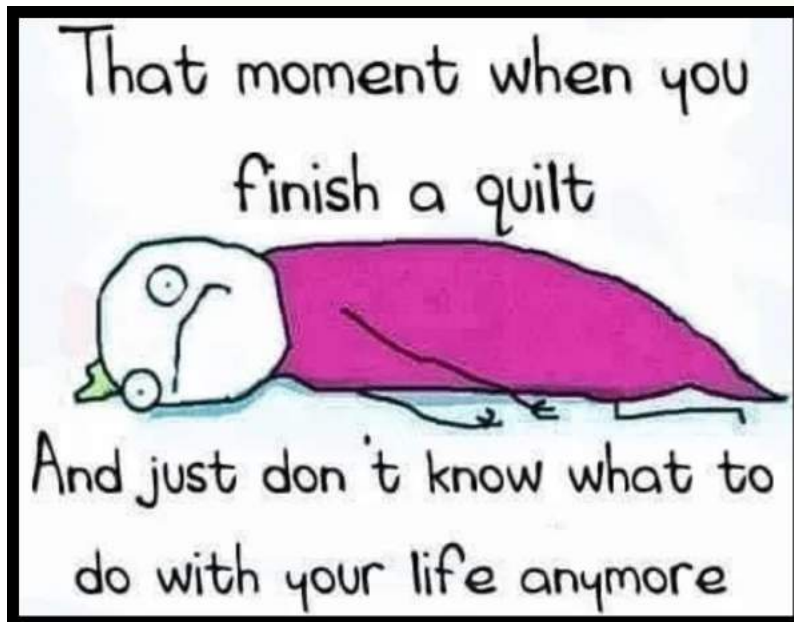


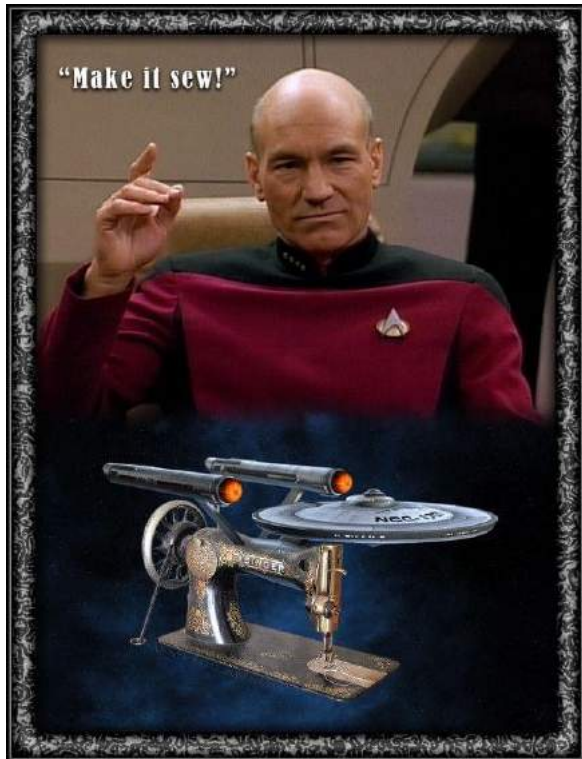
### 30th Anniversary Committee

Do you have a couple of “Best Quilts” that you want to showcase? The Committee, with Karen von Phul at the helm, will have a publisher produce a tabletop book of members’ best quilts. Members whose last name begins with A through M should bring their quilts to the November meeting. Those whose last name begins with N

through Z will bring theirs to January’s meeting. Alan and Linda White volunteered to photograph them. We extend heartfelt gratitude to them for doing so. The cost of the book has not yet been determined, but members will be informed as soon as it is known.

—Connie Turner





### The Rules for Quilting

1. You can never have enough fabric. That's why you keep a stash.
2. Sewing day and night is allowed. Cooking and housework are optional.
3. UFOs are a badge of honor.
4. If you feel inspired by a new fabric line/pattern, start that new quilt. You don't want to lose your creative process.
5. See Rule #1.
6. Unless a fabric is less than 1 inch square, do NOT throw away. Again see Rule #1.

—Artie Johnson

## Let's Organize Show 'n Share

If you do not provide a photo of your Show 'n Share project to Linda ahead of time, please fill out the form at right. Two copies per quilt or other item—one for the website, one for the newsletter. This will enable more accurate information in those media.

## Put Our Motto into Practice

*Wa Shonaji lives by its motto "Each One Teach One." Here's an opportunity to take action!*

I am organizing a brand new quilt event—QUILT2024.com. I want to show the true diversity of the quilting community and so I am looking for teachers of color who perhaps aren't yet well known on the quilting teacher circuit, but who want to increase their visibility.

There is information about teaching at the event at [www.quilt2024.com/teacher\\_reg](http://www.quilt2024.com/teacher_reg) and the general event page (still being worked on as I recruit more teachers) is at [quilt2024.com](http://quilt2024.com).

I am aiming to get teachers recruited for this event by the end of October. But there will be another event next year so I would still love to hear from teachers after that time.

If you have any questions, feel free to reply.

—Alex Byrne <[alex@lixiemakesit.com](mailto:alex@lixiemakesit.com)>





**SHOW AND SHARE Completed Quilt**

Please PRINT LEGIBLY—Fill out 2 per quilt

Date: \_\_\_\_\_ Dimensions \_\_\_\_\_ wide X \_\_\_\_\_ long

Quilt Name: \_\_\_\_\_ Dominant Color \_\_\_\_\_

Maker Name: \_\_\_\_\_

Name of Quilter (if artist did not quilt): \_\_\_\_\_

Pattern Source or Original Design? What was the inspiration? 3 sentences max.

\_\_\_\_\_  
\_\_\_\_\_



**SHOW AND SHARE Completed Quilt**

Please PRINT LEGIBLY—Fill out 2 per quilt

Date: \_\_\_\_\_ Dimensions \_\_\_\_\_ wide X \_\_\_\_\_ long

Quilt Name: \_\_\_\_\_ Dominant Color \_\_\_\_\_

Maker Name: \_\_\_\_\_

Name of Quilter (if artist did not quilt): \_\_\_\_\_

Pattern Source or Original Design? What was the inspiration? 3 sentences max.

\_\_\_\_\_  
\_\_\_\_\_

## Quiltfolk Features Wa Shonaji Online plus a Mention in the Print Version

Let me first start out by saying ... Wa Shonaji is **"AWESOME."**

I am so excited for us, as a Guild, that we are receiving National and International recognition with our presence in the *Quiltfolk Magazine* Colorado issue 28, October 2023.

We were contacted by *Quiltfolk Magazine* in May 2023 to be in their publication for the Colorado issue, scheduled for publication on October 10, 2023. We did not meet their deadline to have a total presence in the magazine. However, as luck would have it, Breanna Briggs, their Editor-In-Chief, reached out to us again to see if we could participate in a photo shoot at Cheesman Park in Denver on June 28. This happened because one of the participants chosen to be in the magazine had a family emergency and could not participate in their scheduled photo shoot that day. Photographer Melanie Zacek and photo stylist Kimberlee Zacek were here in Colorado, with a free day and luckily we gathered enough members, with quilts, to participate in the photo shoot.

Just as a FYI... This is an article about Cheesman Park, the location of our Photo Shoot.

[www.legendsofamerica.com/co-cheesman-park/](http://www.legendsofamerica.com/co-cheesman-park/)



QuiltFolk photo

*I'm thinking...* After Breanna saw the pictures from the photo shoot from Cheesman Park, and the awesome quilts we were photographed with, she decided to give us a "Sneak Peek" in the magazine. These are her words: "Just to clarify: it's really a partial feature. The full story will still be going on our journal, but I decided to put a little "sneak peek" near the back of the issue, with a little blurb about you guys and a few photos. Not as big as I would have liked, but I wanted to try and get you in the book in some fashion."



QuiltFolk photo

You can see the article and pictures from the photo shoot and my interview with Contributing Writer Aleeda Crowley, by following this URL. (Online Journal) [www.quiltfolk.com/journal/](http://www.quiltfolk.com/journal/)

However, I am sure by now, you have pre-viewed the Journal.

Thanks to Carolyn Somerville for sending us the information on how to access the Journal online, and thanks to Al White our webmaster for posting the information and pictures on our website: [www.washonaji.org](http://www.washonaji.org)

Members who participated with a quilt or were present for the photo shoot at Cheesman Park are:

Brenda Ames, Joette Bailey-Keown, DiNyce Brooks-Gough, Adrienne Bryant, Sandra Coleman, Camilla Edwards, Pennie Estrada, Stephanie Hobson, Artie Johnson, Mary Lassiter, Geneva



Lottie, Julie Marsh, Susan Morrison, De Lois Powel, Edith Shelton, Connie Turner, Karen Von Phul, Nanci Vaughn, Marcia Walker, Joanne Walton, and Linda White. Thanks for your support and participation.

A special thanks to *QuiltFolk* magazine for offering us an opportunity to appear in their magazine and on their Journal page.

A Colorado Issue 28 Release Party, sponsored by the Rocky Mountain Quilt Museum and Luana Rubin of eQuilter, was held on Sunday, Oct. 22, at the RMQM. Wa Shonaji was well represented with 20+ members in attendance. We met a number of people who were featured in the *QuiltFolk* magazine, collected autographs, and maybe garnered several prospects for membership in the Guild. Breanna of *QuiltFolk* arranged to have a professional photographer there and he took lots of awesome pictures of the people gathered there.

—Sewful Creations Joanne C. Walton



*Marcia Walker and Karen von Phul celebrate Wa Shonaji's inclusion in an international magazine.*



*Wa Shonaji members*



*Luana Rubin, Di Nyce Brooks-Gough, and Stephanie Hobson are happy to be published quilters!*

## Wa Shonaji Celebrates Joette's Birthday at September Backyard Quilt

For the third year, Vice President of Programs Joette Bailey-Keown invited Wa Shonaji members and guests to her backyard in celebration of her birthday. Accepting quilts that have not been displayed before in her backyard, she displays them throughout her pretty flowers and shade-

giving trees. Husband prepared a delicious lunch of barbecue and members contributed cakes and desserts. It was a beautiful sunny day and a wonderful "September Guild Meeting."



*Several generations enjoyed quilts, play, lunch, and camaraderie at Joette's backyard.*



*Rosemary Sherrell invited family members to join us at Joette's birthday party.*



*Karen von Phul and her mother, Wa Shonaji member Erna (Jeannette) Sanderson, enjoy lunch in Joette's backyard.*



## Wa Shonaji Exhibit at Aurora Libraries Till December

Quilts by Rocky Mountain are on exhibit at the Martin Luther King Library and the Tallyn's Research Library in Aurora. They were installed by Marcia Walker and Stephanie Hobson on Oct. 2.

Members who provided quilts for display include: Brenda Ames, Stephanie Hobson, Camilla Edwards, Karen von Phul, Edith Shelton, Linda White, and Joanne Walton.

The locations and hours of the Libraries are:

- Martin Luther King, Jr. Library & Municipal Services Center, 9898 E. Colfax Avenue, Aurora, CO 80010; open Monday–Saturday, 10 a.m.–6 p.m.
- Tallyn's Reach Library, 23911 E. Arapahoe Road, Aurora, CO 80016; open Monday–Thursday, 9 a.m.–8 p.m. and Friday–Sunday, 10 a.m.–6 p.m.

Information about our exhibit and a link to RMWSQG website can be found at [Art Exhibits - City of Aurora \(auroragov.org\)](http://www.auroragov.org/ArtExhibits-CityofAurora)  
[www.auroragov.org/cms/One.aspx?portalId=16242704&pageId=16565744](http://www.auroragov.org/cms/One.aspx?portalId=16242704&pageId=16565744)

If you are in the area or can put it on your schedule, visit the exhibit and see these AWESOME quilts by Wa Shonaji.

—Joanne Walton, Exhibit Coordinator



## Belle Grove Plantation

### Textile Artist Commissioned to Create a Quilt Honoring the Enslaved

Belle Grove has hired award-winning textile and fiber artist Carole Gary Staples to create a quilt that will honor the more than 270 individuals who were enslaved at the plantation from the 1780s to the 1860s. This unique art piece will be a lasting memorial honoring these men, women, and children, and will introduce the story of their lives to museum visitors.

Hite family records include lists of the people they enslaved including their name, birthdate, and in some instances, their mother's name. The Winchester Chapter of the Embroiderers' Guild of America is a partner on this project and its members transcribed the names and dates onto muslin quilt blocks. They also led community stitching workshops where participants each stitched a name. Representatives from Belle Grove and the Embroidery Guild attended last summer's Juneteenth celebrations at the Clarke County Fairgrounds in Berryville and at the Museum of the Shenandoah Valley in Winchester, and attendees were encouraged to "make-a-stitch" for the quilt.

Ms. Staples, who lives in West Chester, Ohio, will create the final design for the quilt top, arranging the name blocks by families, wherever possible. She will select colorful African-inspired fabrics to enhance the design of the quilt. She said, "I am very happy and excited to be part of this important, enlightening project memorializing the significance of these enslaved people."

With more than 30 years of experience, Ms. Staples' work has been featured in museums and art galleries throughout the United States, Africa, Europe, and Asia and in numerous books, newspapers, and exhibit catalogs. In addition to solo exhibitions of her work, she has created pieces for exhibits that honored Barack Obama, Nelson Mandela, and Desmond Tutu.

Her artwork largely consists of 100 percent cotton fabrics precisely pieced and embel-

lished to create an image. Ms. Staples describes her art as having "a literal presentation but a figurative presentation and this intentional dichotomy evokes emotions and feelings of spirituality."

"We are delighted to have Ms. Staples' expertise on this project," said Kristen Laise, executive director of Belle Grove. "Her creativity and commitment to high quality workmanship will bring to life our vision for an artwork that will educate and inspire for decades to come." Support for making this quilt was provided by a grant from Crescent Cities Charities and a gift from Frederick S. and Christine Andreae.

Ms. Staples expects to complete the quilt top by early 2024 and will advise on how the quilt should be hand quilted. This will also be a community effort, and individuals and groups will be invited to Belle Grove to participate in the quilting process. When completed, the quilt will hang on the wall on the lower level of the Manor House at the entrance to "Unearthing Enslaved Lives at Belle Grove," which contains artifacts from archaeology done at the enslaved quartering site.

*[Info from a 2023 press release from Belle Grove Plantation, which is in Middletown, VA. The Manor House is pictured below.]*





## 8 Ways to Label Your Quilts—and Why You Should!

You've almost finished the quilt you've been working on. You've put so much love and a long time into your creation. It's tempting to just bind it and be done!

But you may want to consider taking the time to put a quilt label on it before you finish.

I'm going to show you over 8 ways to label your quilts, but first a little bit about why you should!

Just like a painter or a photographer will sign their work, a quilter should absolutely "sign" their work as well. It is a work of art after all! (Don't scoff—even if you don't consider yourself an "artist" there are plenty of other reasons to label your quilts—read on!)

While some may argue it's not necessary, a good quilt label will identify your quilt, and it's a great way to give its story a little extra something. Say hello to living history!

A label gives your handmade quilts that extra personal touch.

### What is a Quilt Label?

A quilt label is sewn on the back of a finished quilt to provide information about the quilter, recipient, date and place the quilt was made, and other information.

It can be as simple as quick, hand-written information placed directly on the back of the quilt to an elaborate printed label sewn in place.

### Reasons to Label your Quilts

Imagine future generations using your quilt decades from now. A quilt label is a great way for them to know exactly who made it, when it was made, and any other pertinent information.

Quilters use custom-made quilt labels to tell the story of the quilt, share some words of wisdom, a special message, maybe even include a special poem or a prayer, and so much more.

### How Quilt Historians use Quilt Labels

While most quilters now understand the value of adding quilt labels for future generations, that hasn't always been the case. We're often left to figure out the story behind a quilt based on unreliable memories or we may never know who made a quilt or why.

Quilt historians often use quilt labels to research and understand the development of quilt patterns, the popularity of methods and fabrics, the economic status

of specific areas in specific time periods, and so much more.

Not to mention that the focus of a quilt may reflect what was occurring during that time.

Do you know someone who quilted during the pandemic or someone who made a Black Lives Matter quilt?

The context and reasoning may be obvious to us now, but future generations may have no idea how to place context around this. However, with quilt labels, quilt historians and those who inherit those quilts will.

### What to Include on a Quilt Label

The good thing about a quilt label is it can be as simple or as detailed as you wish. There are some basics that all quilt label designs should include:

- Your (or the quilter's) full name
- Date
- Your city, state, and country

This basic information will give it some identifying historical information if the quilt is ever gifted, found, and so on.

There is also some optional information you could include if you wish: This includes:

- Recipient's name
- Name of the quilt
- An inscription – Perhaps you made the quilt for a special occasion
- The quilt's story – You could share how and why you made this quilt, names of the quilt blocks or pattern used, and any other notable information you'd want to share with someone.
- Anyone who helped in the making of the quilt—for example a long armer
- Washing and care instructions

### How to Make Quilt Labels 8 Ways

There are lots of different ways to make your own labels, whether a custom label or simple labels.

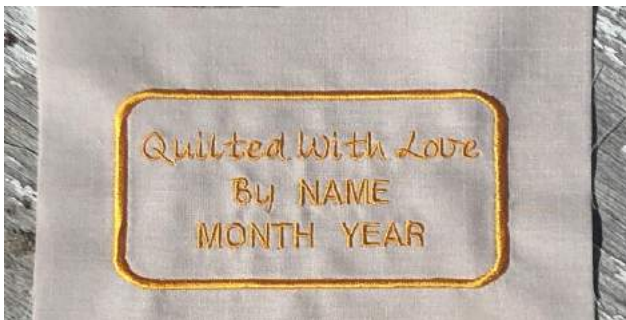
Depending on what design elements you end up using, here are a few supplies you may need, I'll explain which materials go with which method below!:

- Embroidery or sewing machine

- Pigma pen or other permanent fabric marker
- Ink jet printer
- Preprinted labels
- Twill tape
- Freezer tape

### Quilt Label 1: Machine Embroidery

Machine embroidery is a great option. If you already have a special embroidery machine, you are laughing! Just choose a design and what you want to include on your label and you'll be done in no time.



I don't have a special embroidery machine or an embroidery module but I have used the built-in alphabet stitching options on both my Janome 4300QDC and my Bernina 770QE to machine embroider basic looking quilt labels.



### Quilt Label 2: Hand Embroidery

You can make hand-embroidered labels using an ordinary piece of quilting cotton, an embroidery hoop and some embroidery floss.

It takes a bit of extra time but it can be a nice way to add a super personal touch (and you can do your hand sewing in front of the TV!).

### Quilt Label 3: Fabric Pens

You can actually make hand-written quilt labels. You can write directly onto a piece of fabric (or even the quilt backing) with a fine-tipped permanent marker.

Pigma Micron pens are widely used for this, but I would suggest doing a test before writing on the quilt backing itself.



I have also used Prym Fabric Pens that come in a pack with little labels for kid's clothes. See my video version of this post for more on how I use these.

That is actually fabric that looks like lined paper in the photo above! I got a little bit in a scrap bag and thought it would be perfect for a handwritten label!

### Quilt Label 4: Pre-printed Quilt Label Fabric

Many fabric companies sell pre-printed quilt labels on quilting cotton fabric.

Obviously these labels don't have the crucial information of your name or the date but you can use either fabric pens or embroidery to add those details in.



## Quilt Label 5: Printable Fabric Quilt Labels

The next option is basically to make a printed label on fabric at home yourself.

Quilt labels can be created using a computer and an inkjet printer by printing your design on printable fabric sheets. You can find these at quilt shops, craft stores, or Amazon.

This method will give you the option to include all sorts of things such as photos, unique fonts, graphics, and so on.

You can design your labels in Word or Publisher (or any app you like for that matter!) and then print them directly onto your fabric paper.

*NOTE: Make sure you have an INKJET PRINTER. I tried using a mono printer and it printed well enough for me to use it as a template for a fabric pen or embroidery but it didn't print boldly enough to be used as a stand alone label.*

Make sure you follow the printing instructions and after-printing instructions for the specific brand of paper you choose to use. The brand I used, PhotoFabric, required a cold rinse under the tap after printing.

Make sure you leave enough of a margin before you cut the label out, so you can tuck the edges under when you sew the label onto your binding.

The tutorial on my website goes into detail on how to design and print your label on an inkjet printer and then attach it to your quilt.

The video also shows my new favorite place to put my labels—directly on the binding! It means I can skip the hand sewing and sew it on by machine—such a time saver!

## Quilt Label 6: Printable Fabric Label with a Fabric Pen

If you don't have an inkjet printer or you just want to make extra sure your label doesn't fade with time you can trace over a printable fabric label using one of the fabric pens mentioned above in Method 3.



I did this for my Queen Size Quilt as You Go quilt because the label I printed on my (mono) printer didn't come out dark enough.

## Quilt Label 7: Printable Fabric Label with Hand Embroidery

Another option is to use a printable fabric label design as a basis for a hand-embroidered label. The photo above under Method 2 was actually made this way. It was another quilt label I tried to print using the wrong type of printer so I went ahead and embroidered over the printed text with some embroidery floss.

I'm sure it made my embroidery much neater!

## Quilt Label 8: Buy Custom-Made Labels

I have a few more extra quilt label suggestions below but if all of this seems like too much hard work



you might consider buying a custom-made quilt label from a small business seller on Etsy.

Custom Quilt Labels are great if you want to give your quilt a professional finish.

You can purchase custom labels from many independent label sellers on Etsy or other online stores.

These can work great for anyone who sells their quilts, puts them in quilt shows, or just if you want something extra special.

### More Quilt Label Ideas

**Twill Tape**—If you're looking to keep it simple, twill tape is the answer. You can machine stitch the twill tape label into the corner and then hand stitch the binding over.

You can also use an inkjet printer to print your design onto your twill tape labels using the tutorial on my website.



Additionally, you can order custom-made twill tape labels on Etsy.

**Freezer Paper** – You can also use a piece of freezer paper to print your quilt label on a laser printer.

If you've never used freezer paper for printing, I've placed a link to a great tutorial on my website.

### Where to Place your Quilt Label

You'll want to place your label somewhere it won't show if the quilt is hung on the wall or placed on the bed.

**Bottom Corners**—A common place used by many quilters is on one of the bottom corners of the back of the quilt.

Sew it firmly to the backing fabric before you actually assemble the quilt, then you can hand or machine quilt right through the label.

I often forget to make the label before I've basted and quilted the quilt so I often machine sew the label into the binding on two sides (i.e., in a corner) and then needle turn applique the other two edges when I'm done.

**Extra Block**—If you want to make your label part of the quilt back, you can also make a fabric label using a block that's left over from the front of the quilt then your label will coordinate with your quilt's fabric.

If you are piecing your back anyway this can be a great option, but remember that if you're quilting through it you might obscure some of the writing, which is why many quilters hand-stitch their labels on at the end.

If you are labeling something that you are adding a wall hanging to, you could place the label on that. For example, if you are putting a folded corner of fabric on each top corner to hold a dowel then one of your folded corners could be the label.

**On the binding**—Since writing this post originally, I have experimented with putting my la-





bels on the binding in two ways:

1. machine embroidered label on my quilt binding. It was kind of hard to get it to sit straight but I think I still like it. I just machine embroidered on a scrap strip of binding (already folded) and then joined it to the rest of the binding for the quilt.
2. quilt label printed on fabric then machine sewn to the binding. This is my new absolute favorite way to add labels and I demonstrate how I do it in the video on my website.

In short, you print your labels long and thin and sew them directly onto the binding strip before binding your quilt. No hand-sewing!

## Saying & Inscription Ideas for Quilt Labels

As well as the suggestions below, there is now a new post on my website with over 100 quilt label saying suggestions for every occasion.

### Personalized Quilt Label Ideas

There are a bunch of great ideas when it comes to what you can put on your quilt's label. Here are some fantastic label options depending on the circumstance.



- Made by [your/maker name]. [Year].
- Handmade in [city, state].

## Quilt Label Ideas for Family and Friends

- Anytime you need a hug, wrap this quilt around you and feel my love.
- Made with love and little pieces of my heart. Pieced with love by [maker name].
- Quilts are one-of-a-kind, just like you!
- Created with perfect intentions by imperfect hands.
- A quilt to warm your body and comfort your soul.
- Handmade with love.
- Handmade just for you.
- Made for [quilt recipient] with love.
- A family stitched together with love, seldom unravels.
- A family is a patchwork of LOVE.
- Blessed are the children of quilters, for they shall inherit the quilts.

### Label Ideas for Baby Quilts

- May you have warmth and comfort always. Quilting with love for my [niece, nephew, etc].
- Welcome to the world [recipient's name]. Born [date] at [time]. [weight]. [length]. Made and given with love by [maker's relationship to child and name].
- Welcome to the world [recipient's name]. [Date of birth].

### Funny Quilt Label Ideas

- Made with love, cat hair, and a whole lot of swearing.
- Quality sh\*t.
- This took forever.
- Made with love and profanity.
- Made with love, not perfection.
- This was really hard and took forever.
- This took forever so you'd better pretend to love it.

## Random Quilt Label Ideas

- For graduation: Behind you—all your memories. Before you—all your dreams. Around you—all who love you. Within you—all you need.

- For wedding: May the colors of your life be bright. And the threads of your life be strong.

What's your favorite way to label your special quilts? Do you have a fun, creative way I didn't mention here?

Reprinted by permission from Kristen Hubert, "Scrap Fabric Love" Blog, Sept. 27, 2023

[https://scrapfabriclove.com/8-ways-to-label-your-quilts-and-why-you-should/?utm\\_source=](https://scrapfabriclove.com/8-ways-to-label-your-quilts-and-why-you-should/?utm_source=)



*Wa Shonaji's October speaker, Mike Klicek, shows just two of his incredible small or mini quilts. He only paper pieces—leaving the paper in the quilt—and*

*does precious little quilting. His presentation was fun and inspiring. He even shared his fee with the members—a package of store-bought Fig Newtons!*



This installment of Sister Stitcher was first published in the April -June 2019 issue of the Wa Shonaji newsletter.



## Sister Stitcher

*Have you met Sister Stitcher? She is a mythical quilter whose quarter inch never wavers, whose bobbin never runs out, and who finishes her projects on time. She lives in a house that never needs cleaning, with a spouse who cooks and holds up quilts as requested. Her studio space measures 100x100, with lots of natural light. Oddly enough, it never needs cleaning either.*

*This month Sister Stitcher is thinking about vacation....*

*Sister Stitcher the more I sew, the happier I am! Quilting time really is my Happy Hour. But after about two hours, I feel a crick in my neck, and my back stiffening. Can you suggest any stretches?*

Sister is right there with you. She sat down one night to put just a few strips together ... and then the grandfather clock struck midnight. Pumpkin time indeed.

If you get overly focused on your quarter-inch seam, set yourself an alarm for about 90 minutes after you sit down, on your phone or on a timer. When that sucker goes bong, here's what Sister does:

Stand up, and slowly reeeeeaaaaaccch for the sky. Straighten your back, and roll your shoulders gently. You've been hunched over your machine, and your spine is saying, "Please release me, let me go." Let it go, but slooooooowly. No need to rush.

Now put an arm straight out in front of you, and just feel that stretch for a count of about 10. Gently bend your hand back toward you for another count of 10, and repeat if you like. Then repeat with your other arm and hand.

Now Sister often bends down to touch her toes and then backwards before heading to her kitchen for a glass of water. Like you, Sister forgets to keep herself hydrated when she's on a quilting roll. The Stretch Break is a good opportunity to

swig some H<sub>2</sub>O and see some people you've been missing. Like your family.

Sister leaves you with some other suggestions: American Quilters Society Ten Exercises for Quiltmakers (<https://dev.americanquilter.com/blog/ten-exercises-for-quilters-2/>): Our AQS friends know about getting lost in your quilting and the need for a break.

Stretching for Quilters ([www.youtube.com/watch?v=OQ1AbikZI6U](http://www.youtube.com/watch?v=OQ1AbikZI6U)): Don't forget the hip flexors! Randall Cook, a quilter himself, is serious all right, but he knows what he's talking about.

—Chris Jacques

*Families are like Quilts...  
Lives pieced together -  
Stitched with smiles  
and tears, colored  
with memories  
and bound by  
Love.*





### **November Birthdays**

- |                            |                                |
|----------------------------|--------------------------------|
| 3 Nov – Valerie White      | 25 Nov – Luana Rubin           |
| 4 Nov – Vicki Tomlin       | 25 Nov – Teri Washington       |
| 17 Nov – Rosemary Sherrell | 29 Nov – Gwendolyn Cobb-Grimes |



### **December Birthdays**

- |                           |                         |
|---------------------------|-------------------------|
| 5 Dec – Nanci Vaughn      | 12 Dec – Alfreda Kemper |
| 5 Dec – Glenda Trees      | 14 Dec – Edith Shelton  |
| 8 Dec – Julie Marsh       | 15 Dec – Kathy Byers    |
| 10 Dec – Stephanie Hobson | 19 Dec – Artie Johnson  |
| 10 Dec – Al White         |                         |



## Area Textile Events

### Rocky Mountain Quilt Museum

200 Violet St., Golden, Mon–Sat 10–4; Sunday 11–4. \$12 adults; \$10 seniors; members free.

Oct 16–Jan 13, 2024 *19th Century Patchwork Divas* | *25 Years of Scraps* Historic quilt reproductions and **Diana Fox Solo Exhibit**, *Outside the Frame's Edge*

Nov 12, **Sunday at the Museum**, 2 pm. Paullette Reading *Quilt Conservation and Restoration*  
More info at [www.rmqm.org](http://www.rmqm.org)

### Colorado Quilting Council (CQC)

Meetings are held via Zoom and in person at Waterstone Community Church, 5890 S. Alkire St., Littleton 80127. In-person guest fee \$10.

Dec 2, **Meeting**, 9:30 a.m. **Holiday Luncheon** follows meeting; mail menu choice and payment by Nov 15—see website

For more information, visit [www.coloradoquiltingcouncil.com](http://www.coloradoquiltingcouncil.com). Or contact Pam Ballard CQC.VP.Programs@gmail.com. She can also give you Zoom info.

### Columbine Quilt Guild

Second Monday at Denver Church of Christ, 6925 Carr St., Arvada, at 6:30 p.m. In-person and Zoom. Guest fee \$5.

Nov 13, **Meeting**, Signup for 2024 *Give It a Try* workshops. Ask Julie Marsh for info.

Dec 11, **Holiday Party and Potluck**

For more information [columbineqg@gmail.com](mailto:columbineqg@gmail.com) or [www.columbinequiltguild.org](http://www.columbinequiltguild.org)

### Arapahoe County Quilters

Second Thursday at Our Father Lutheran Church, 6335 S Holly St, Centennial 80121. 6:30 pm. In-person and Zoom. Guest fee \$8.

Nov 9, **Meeting**, guest speaker Carl Hentsch of “3 Dog Design Co” will discuss how the Amish use of color and design influenced modern quilting. Register at [acqcolorado.org](http://acqcolorado.org) for \$8 nonmember fee

Dec 7, **Zoom meeting UFO Challenge 2023**

For information [www.acqcolorado.org](http://www.acqcolorado.org)

### Quaking Aspen Quilt Guild

Boulder Valley Christian Church, 7100 S. Boulder Road, Boulder, or Zoom. Third Thursday, noon.

Nov 16, **Meeting**, Member Spotlight Trunk Show: 3 members share their quilting journeys

Contact [vp-programs@quakingaspenquiltguild.org](mailto:vp-programs@quakingaspenquiltguild.org) or visit the website at [www.quakingaspenquiltguild.org](http://www.quakingaspenquiltguild.org)



2024 MEMBERSHIP REGISTRATION FORM  
ROCKY MOUNTAIN WA SHONAJI QUILT GUILD

<http://washonaji.org>

January 1 – December 31 – 2024 Annual Dues: \$40.00 \_\_\_\_\_ New Member \_\_\_\_\_

*"My soul is fed by needle and thread."*

Last Name: \_\_\_\_\_ First Name: \_\_\_\_\_

Address: \_\_\_\_\_ City: \_\_\_\_\_ Zip Code: \_\_\_\_\_

Cell Phone: \_\_\_\_\_ Alternate Phone: \_\_\_\_\_

E-mail Address: \_\_\_\_\_ Birthday: Month \_\_\_\_\_ Day \_\_\_\_\_

Annual Membership dues are \$40.00.

Dues will be prorated after June 30 to \$20.00. Make your check or money order payable to Rocky Mountain Wa Shonaji Quilt Guild and mail check with this completed form to:

**Rocky Mountain Wa Shonaji Quilt Guild**  
**Attn: Vice President of Membership**  
**P.O. Box 370405**  
**Denver, CO 80237-0405**

Members will not use the Membership Roster for personal gain. Membership in this Guild is not transferable or assignable to another. As a condition of membership, each member agrees to release and waive any claim he/she has or may have against the RMWS Quilt Guild, its officers or committee members. Please indicate agreement to having your picture taken and published for Guild business or on the website. I also agree that the Membership Roster information may be distributed to the membership quarterly and may appear in a password protected area of the website with access granted ONLY to Guild members.

YES \_\_\_\_\_ NO \_\_\_\_\_

Signature \_\_\_\_\_ Date \_\_\_\_\_

Member Profile Information

The Rocky Mountain Wa Shonaji Quilt Guild is a statewide organization representing the interests in quilt-making and fiber arts from an African American perspective. We work to promote the work and accomplishments of our members and to preserve the tradition, culture, and history of quilting. The members, though predominately of African American ancestry, celebrate ethnic diversity in membership. The Guild offers speakers, workshops, quilt shows, and a newsletter. It takes many members chairing or serving on committees to keep the Guild growing and serving the community. We encourage you to share your talents.

**Please indicate the areas you would like to serve.**

I am willing to serve as: \_\_\_ Committee Chairperson \_\_\_ Committee Member

Which committee/groups are you interested in joining? \_\_\_ Choir \_\_\_ Exhibits \_\_\_ Sunshine and Shadows  
\_\_\_ Hospitality \_\_\_ Comfort Quilts \_\_\_ Publicity

Check the area(s) below where you would be willing to volunteer your time: \_\_\_ Gifts, Grants, Fundraising

\_\_\_ Membership \_\_\_ Programs \_\_\_ Website Maintenance \_\_\_ Newsletter/Advertising \_\_\_ Reporting/Writing  
\_\_\_ Photography \_\_\_ Guild History \_\_\_ Accounting/Bookkeeping \_\_\_ Public Relations  
\_\_\_ Parliamentary Procedure \_\_\_ Guild Retreat

I am interested in: \_\_\_\_\_ Presenting a program \_\_\_\_\_ Teaching a workshop

Suggestions for programs, lectures, or workshops: (Use back of page please)

For Official Use Only

Received by: \_\_\_\_\_ Date: \_\_\_\_\_

Name: \_\_\_\_\_ Amount Paid: \_\_\_\_\_ Check #: \_\_\_\_\_ Cash: \_\_\_\_\_



**Rocky Mountain  
Wa Shonaji Quilt Guild**

Wa Shonaji provides a warm, nurturing atmosphere to promote an interest in quilt making and other fiber arts primarily from an African-American perspective.

We both educate ourselves and share our knowledge with others, based on the motto "Each One, Teach One." We seek to encourage the work and accomplishments of our members and to preserve the tradition, culture, and history of quilting. Rather than judge each other's work, we learn from it and revel in it.

All quilters, regardless of their interests or skill levels, are welcome.

**MONTHLY MEETINGS**

11 am, first Saturday of each month (unless it's a holiday) at CrossPurpose, 3050 Richard Allen Court, Denver 80205

For more information, visit [www.washonaji.org](http://www.washonaji.org) or email [washonaji@gmail.com](mailto:washonaji@gmail.com)



Thank you to all contributors as noted plus Stephanie Hobson, Linda White, Gwendolyn Cobb-Grimes, and "associate editor" Joanne Walton for their additions to this newsletter as well.

Editor Julie Marsh